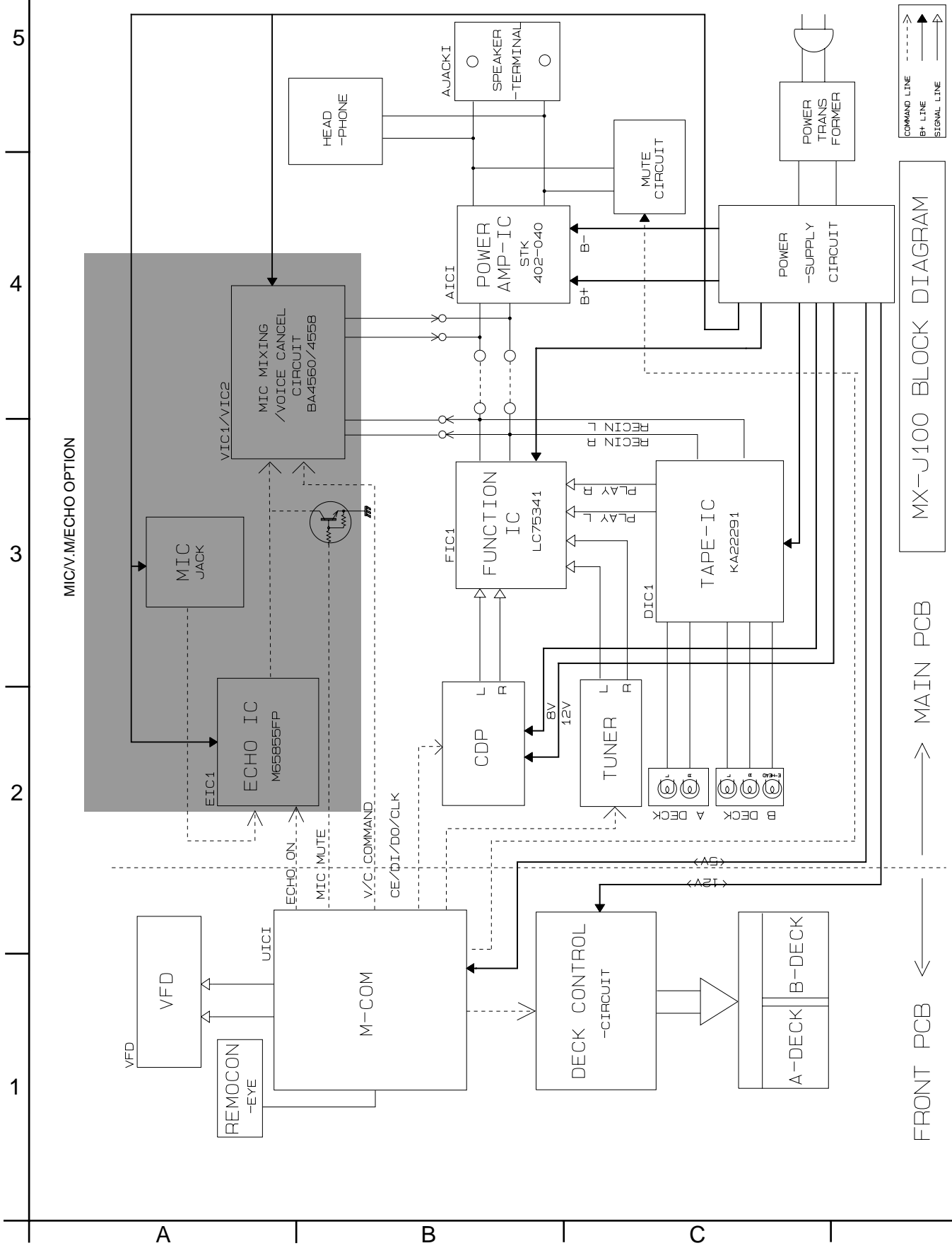
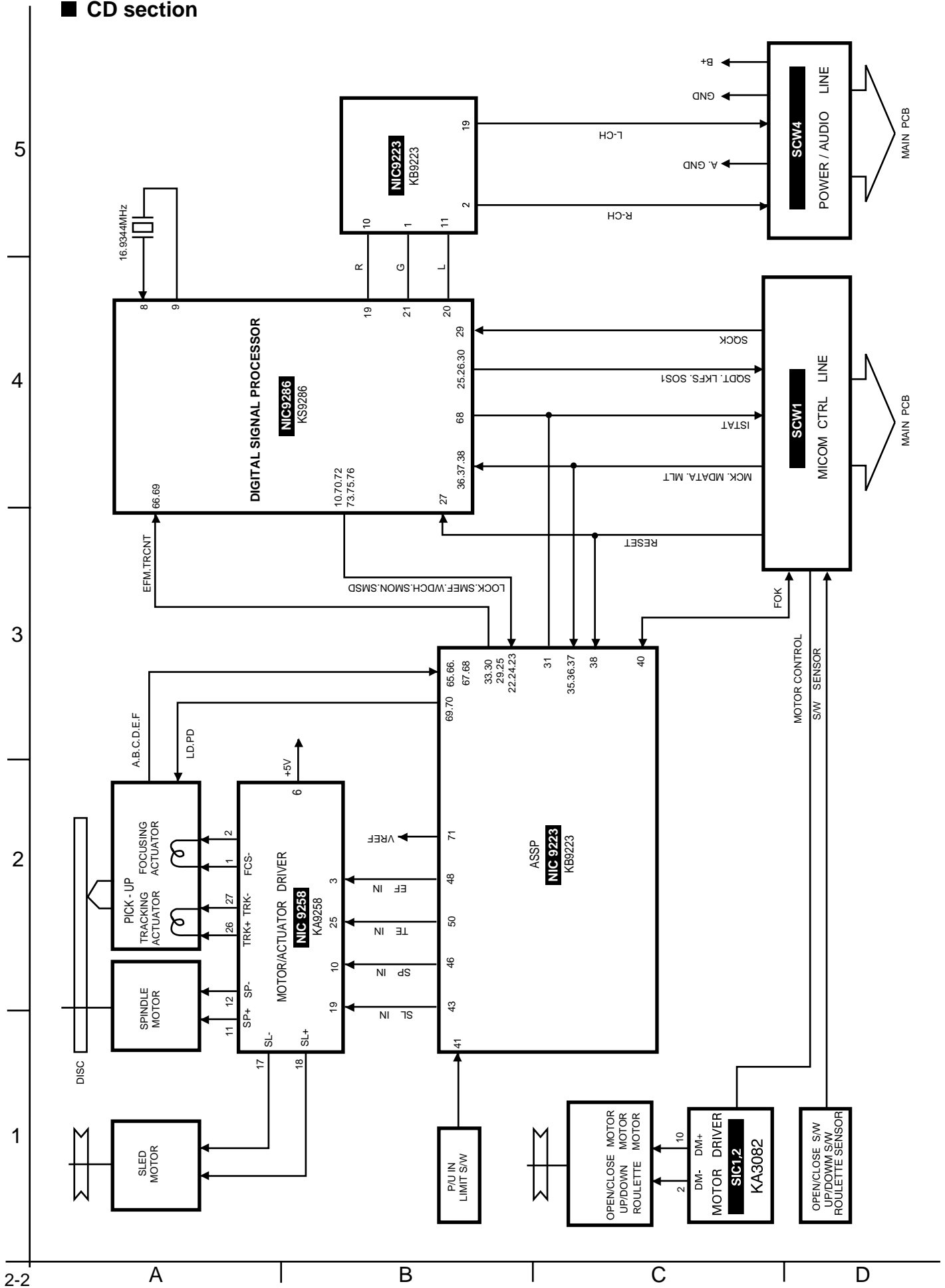


Block diagrams

■ Main section



■ CD section

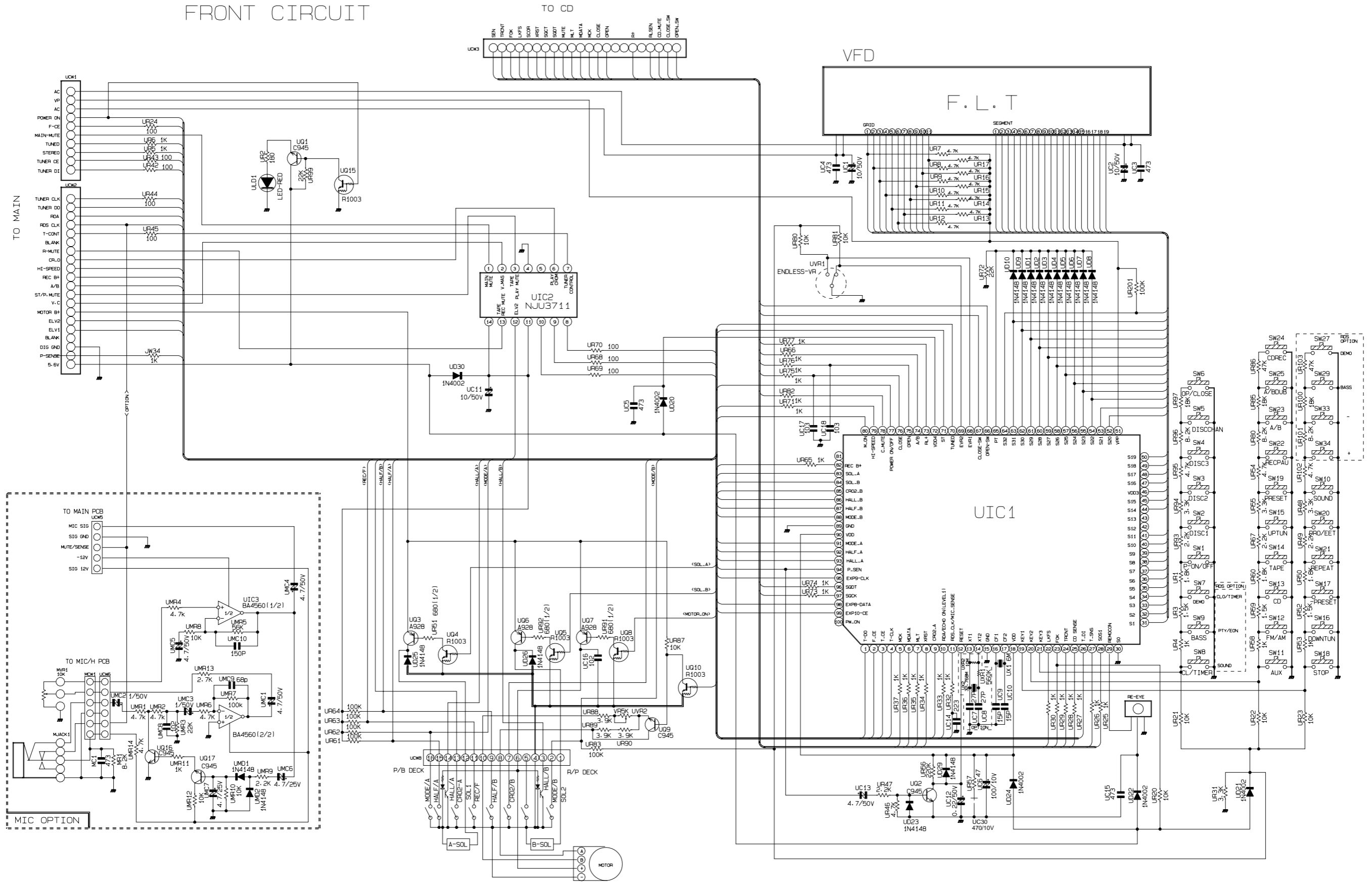


Standard schematic diagrams

■ Front section

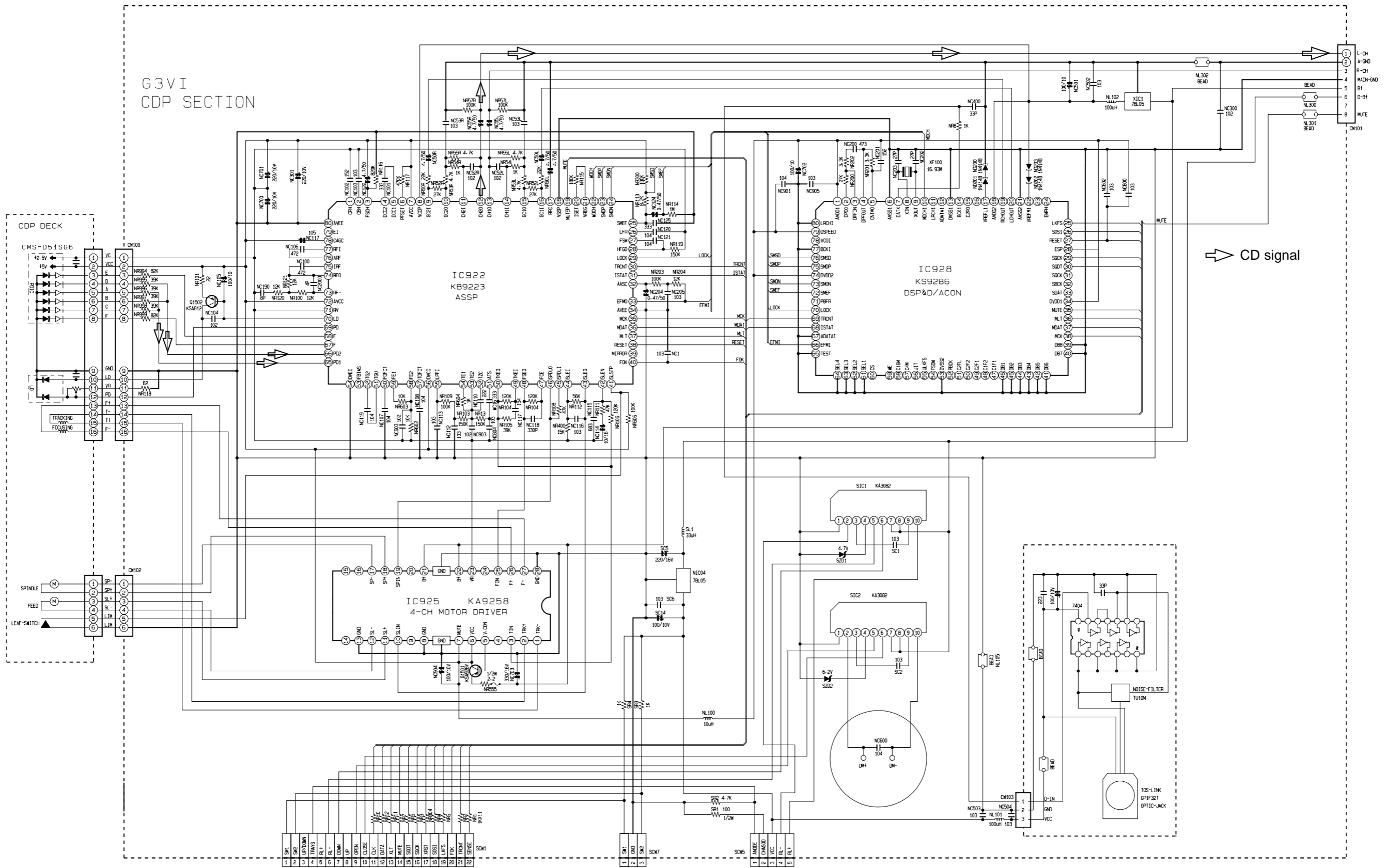
FRONT CIRCUIT

5
4
3
2
1



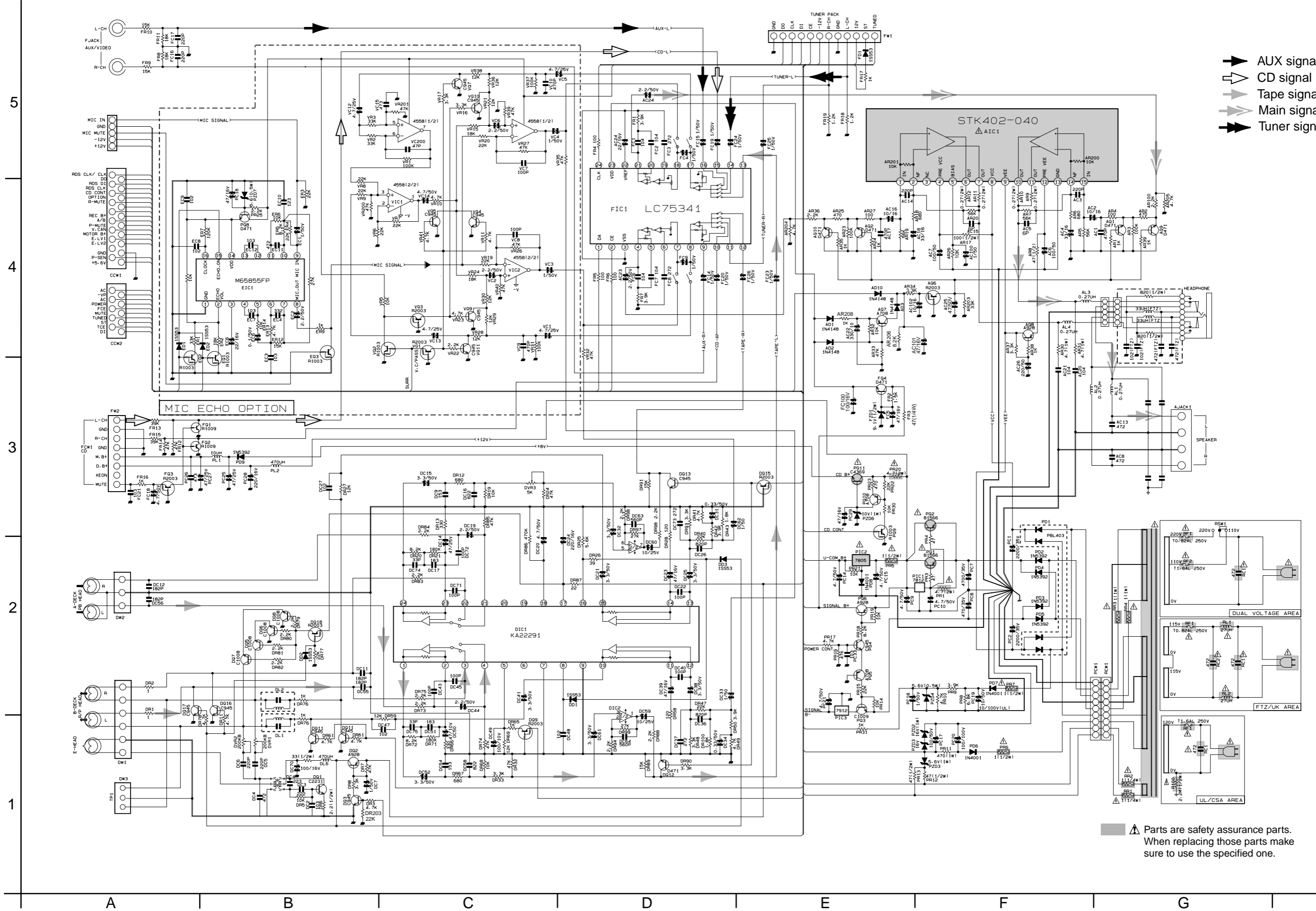
CD section

5
4
3
2
1



A | B | C | 24 | D | E | F | G | H

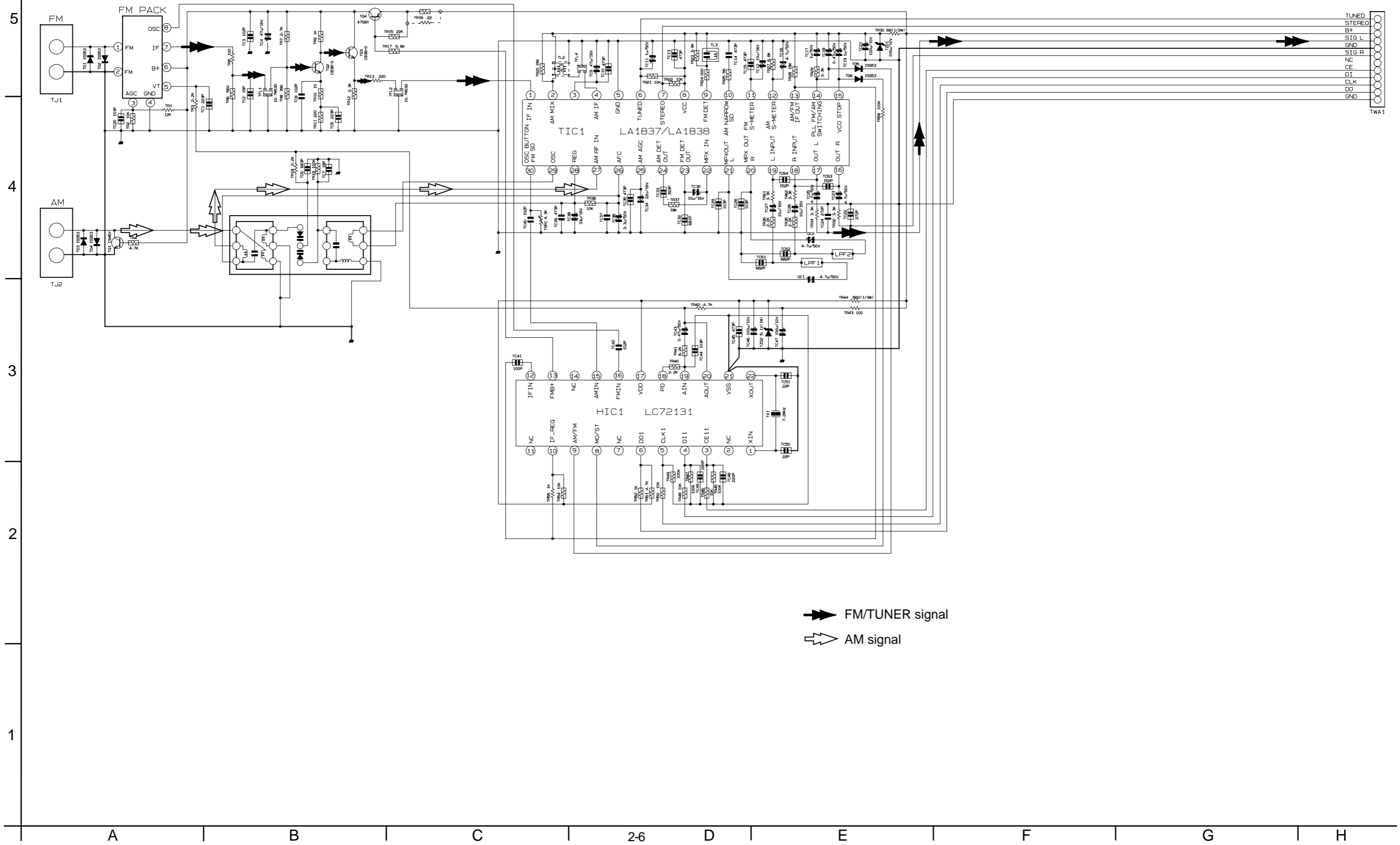
■ Main section



- ➡ AUX signal
- ⬅ CD signal
- ➡ Tape signal
- ➡ Main signal
- ➡ Tuner signal

⚠ Parts are safety assurance parts.
When replacing those parts make sure to use the specified one.

■ Tuner section

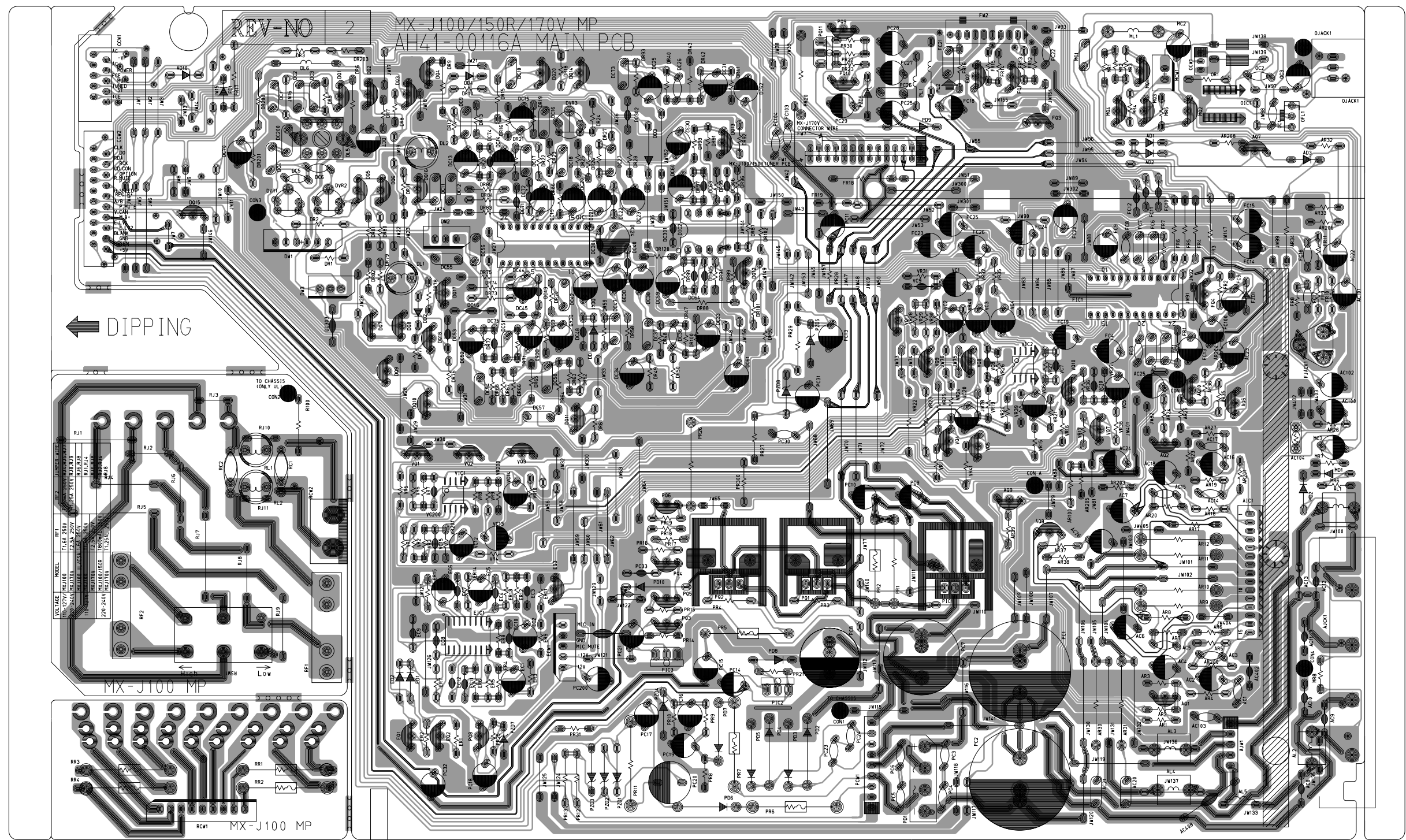


➔ FM/TUNER signal
⚡ AM signal

Printed circuit boards

■ Main board

5
4
3
2
1



*** DIODE ***

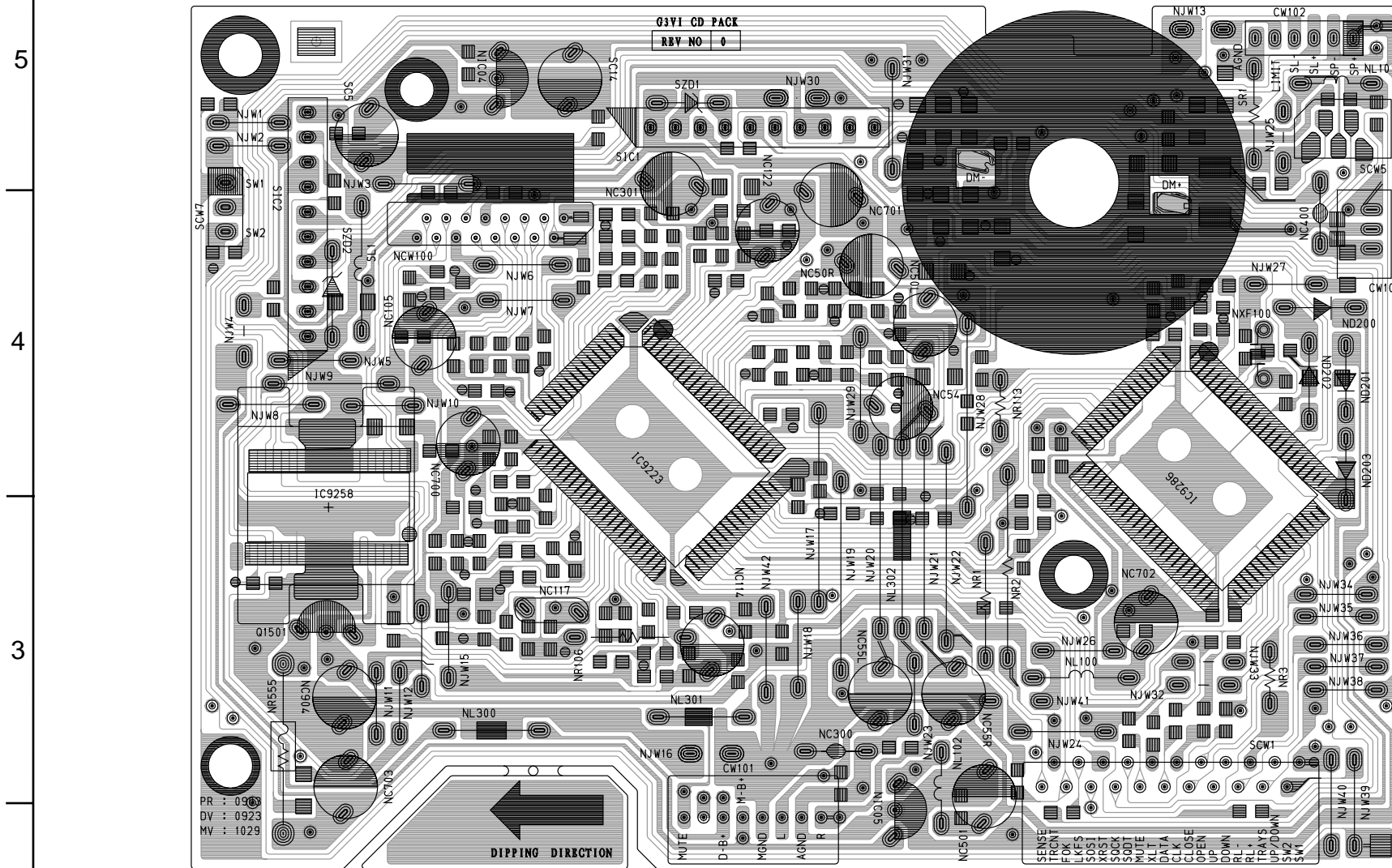
- AD1 (J5)
- AD2 (J5)
- AD3 (K5)
- DD1 (E4)
- DD2 (D4)
- DD3 (F5)
- DD4 (D6)
- ED1 (D1)
- ED2 (D1)
- FD1 (B6)
- FZD1 (J4)
- MD1 (K2)
- MD2 (K2)
- PD10 (E1)
- PD2 (G0)
- PD3 (G0)
- PD4 (F0)
- PD5 (F0)
- PD6 (F0)
- PD7 (F0)
- PD8 (G1)
- PD9 (H5)
- PZD1 (E0)
- PZD2 (E0)
- PZD3 (E0)
- PZD4 (F1)
- PZD5 (G4)
- PZD6 (G6)
- PZD7 (D0)
- PZD8 (G3)

*** IC&WAFER ***

- AJW1 (J0)
- DW1 (C4)
- DW2 (D4)
- ECW1 (E1)
- FW1 (G5)
- FW2 (H6)
- FW7 (G5)
- MCW1 (J6)
- OCW1 (J6)
- PCW1 (G0)
- RCW1 (B0)

A B C D E F G

■ CD board



*** RESISTOR *** *** DIODE ***

- NR1 (C0)
- NR106 (B0)
- NR113 (C1)
- NR2 (C0)
- NR3 (D0)
- NR555 (A0)
- SR1 (D2)
- ND201 (D1)
- ND202 (D1)
- ND203 (D1)
- SZD1 (B2)
- SZD2 (A1)

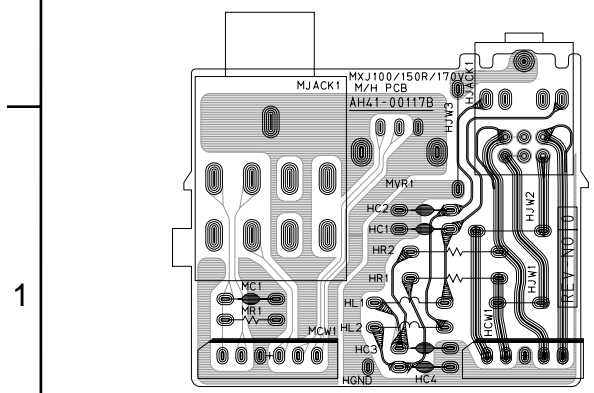
*** CONDENSER *** *** TR ***

- NC105 (A1)
- NC114 (B0)
- NC117 (B0)
- NC122 (B2)
- NC300 (C0)
- NC301 (B2)
- NC400 (D1)
- NC501 (C0)
- NC50L (C1)
- NC50R (C1)
- NC54 (C1)
- NC55L (C0)
- NC55R (C0)
- NC700 (A1)
- NC701 (C2)
- NC702 (D0)
- NC703 (A0)
- NC904 (A0)
- SC5 (A2)
- NIC04 (B2)
- NIC05 (C0)
- Q1501 (A0)

*** IC&WAFER ***

- CW101 (B0)
- CW102 (D2)
- CW103 (E1)
- SCW7 (A2)
- SIC1 (B2)
- SIC2 (A1)

■ MIC / Headphone board



*** RESISTOR *** *** IC&WAFER ***

- HR1 (A0)
- HR2 (A0)
- MR1 (A0)
- HCW1 (B0)
- MCW1 (A0)

*** CONDENSER ***

- HC1 (A0)
- HC2 (A0)
- HC3 (A0)
- HC4 (A0)
- MC1 (A0)

5
4
3
2
1

A B C 2-8 D E F G H

■ Front board

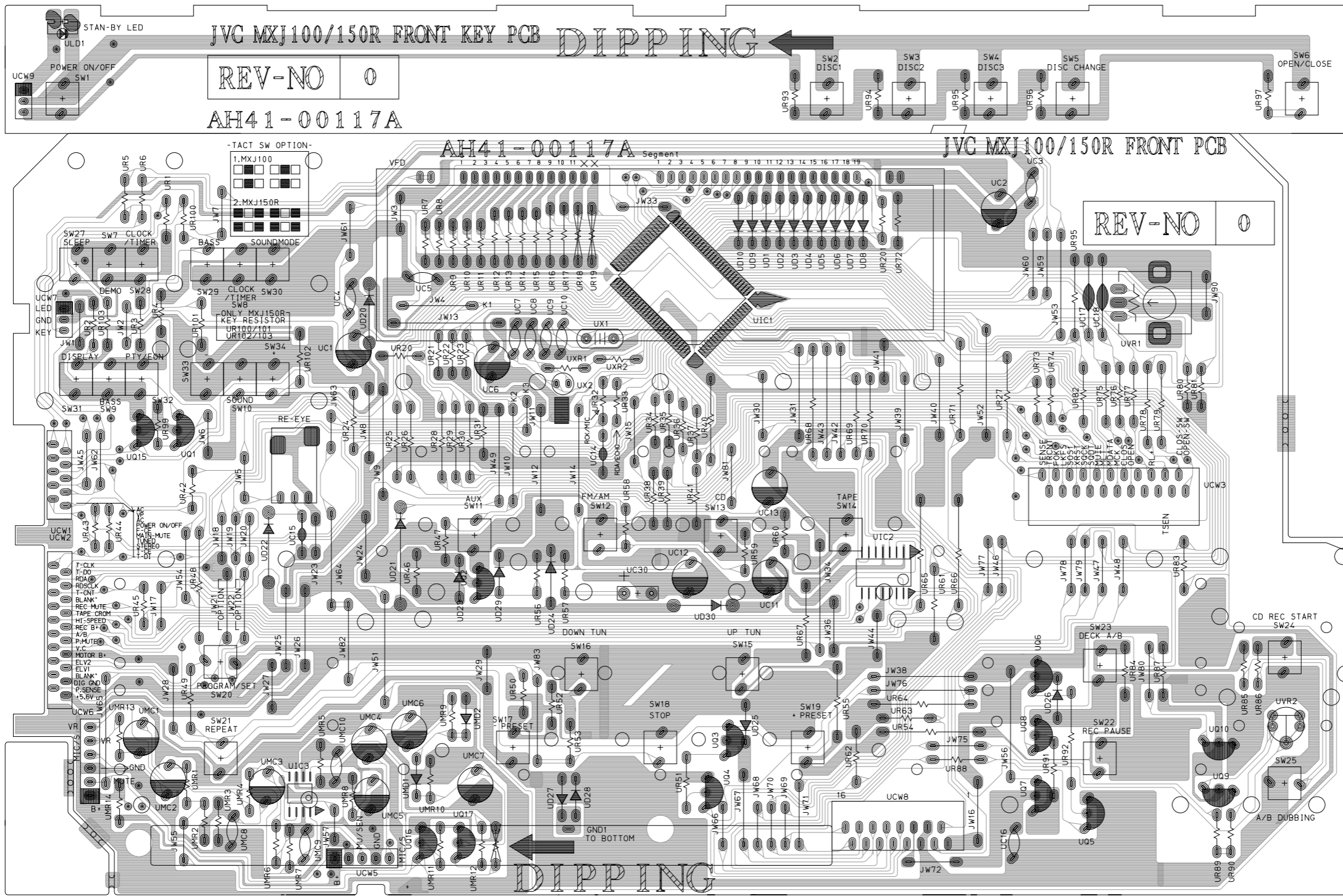
5

4

3

2

1



*** CONDENSER *** *** TR ***

- | | |
|-----------|-----------|
| UC1 (C3) | UQ1 (B2) |
| UC10 (D3) | UQ10 (H0) |
| UC11 (E2) | UQ15 (A2) |
| UC12 (E2) | UQ16 (C0) |
| UC13 (E2) | UQ17 (C0) |
| UC14 (D2) | UQ2 (C1) |
| UC15 (B2) | UQ3 (E1) |
| UC16 (G0) | UQ4 (E0) |
| UC17 (G3) | UQ5 (G0) |
| UC18 (G3) | UQ6 (G1) |
| UC2 (G4) | UQ7 (G0) |
| UC3 (G4) | UQ8 (G1) |
| UC4 (C3) | UQ9 (H0) |
| UC5 (C3) | |
| UC6 (C3) | |
| UC7 (D3) | |
| UC8 (D3) | |
| UC9 (D3) | |

*** IC&WAFER ***

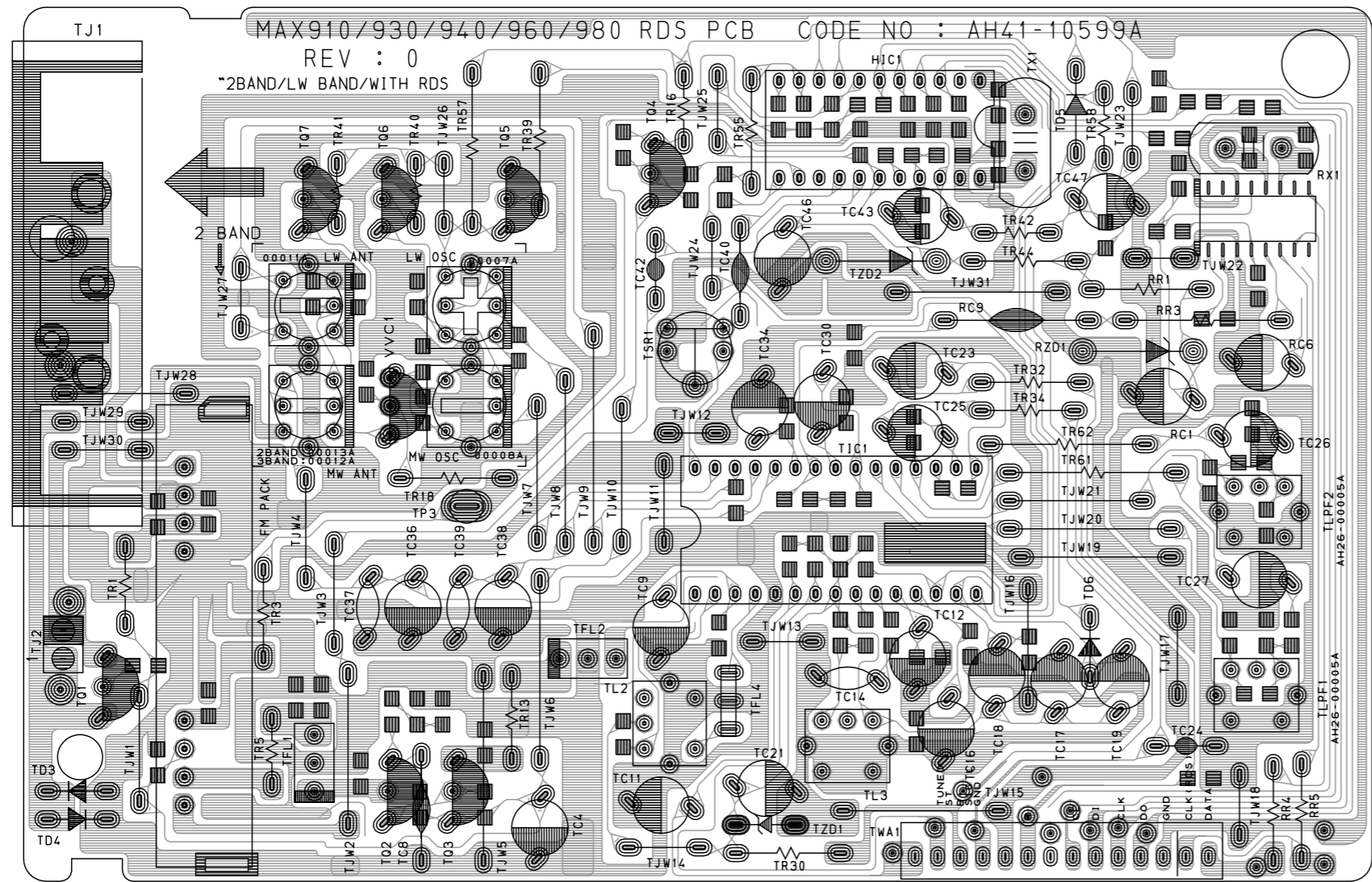
- | | |
|------------|-----------|
| UMC1 (A1) | SW1 (A4) |
| UMC10 (C0) | SW10 (B3) |
| UMC2 (A0) | SW11 (C2) |
| UMC3 (B0) | SW12 (D2) |
| UMC4 (C1) | SW13 (E2) |
| UMC5 (C0) | SW14 (F2) |
| UMC6 (C1) | SW15 (E1) |
| UMC7 (C0) | SW16 (D1) |
| UMC8 (B0) | SW17 (D0) |
| UMC9 (B0) | SW18 (E0) |
| | SW19 (E0) |
| | SW2 (F4) |
| | SW20 (B1) |
| | SW21 (B0) |
| | SW22 (G0) |
| | SW23 (G1) |
| | SW24 (H1) |
| | SW25 (H0) |
| | SW27 (A3) |
| | SW28 (A3) |
| | SW29 (B3) |
| | SW3 (F4) |
| | SW30 (B3) |
| | SW31 (A3) |
| | SW32 (A3) |
| | SW33 (B3) |
| | SW34 (B3) |
| | SW4 (G4) |
| | SW5 (G4) |
| | SW6 (H4) |
| | SW7 (A3) |
| | SW8 (B3) |
| | SW9 (A3) |
| | UC30 (D1) |
| | UCW5 (C0) |
| | UCW6 (A0) |
| | UCW7 (A3) |
| | UCW9 (A4) |
| | UIC1 (E3) |

*** DIODE ***

- | | |
|-----------|-----------|
| UD1 (E3) | SW21 (B0) |
| UD10 (E3) | SW22 (G0) |
| UD2 (E3) | SW23 (G1) |
| UD20 (C3) | SW24 (H1) |
| UD21 (C2) | SW25 (H0) |
| UD22 (B2) | SW27 (A3) |
| UD23 (C2) | SW28 (A3) |
| UD24 (D2) | SW29 (B3) |
| UD25 (E0) | SW3 (F4) |
| UD26 (G1) | SW30 (B3) |
| UD27 (D0) | SW31 (A3) |
| UD28 (D0) | SW32 (A3) |
| UD29 (D2) | SW33 (B3) |
| UD3 (E3) | SW34 (B3) |
| UD30 (E1) | SW4 (G4) |
| UD4 (E3) | SW5 (G4) |
| UD5 (E3) | SW6 (H4) |
| UD6 (F3) | SW7 (A3) |
| UD7 (F3) | SW8 (B3) |
| UD8 (F3) | SW9 (A3) |
| UD9 (E3) | UC30 (D1) |
| UMD1 (C0) | UCW5 (C0) |
| UMD2 (C0) | UCW6 (A0) |
| | UCW7 (A3) |
| | UCW9 (A4) |
| | UIC1 (E3) |

■ Tuner board

5
4
3
2
1



*** CONDENSER ***

*** IC&WAFER ***

- RC9 (C1)
- TC14 (C0)
- TC24 (D0)
- TC37 (B0)
- TC39 (B0)
- TC40 (C1)
- TC42 (B1)
- TC8 (B0)
- TFL4 (C0)
- TJ2 (A0)

*** DIODE ***

- RZD1 (D1)
- TD3 (A0)
- TD4 (A0)
- TD5 (D2)
- TD6 (D0)
- TZD1 (C0)
- TZD2 (C1)

*** TR ***

- TQ1 (A0)
- TQ2 (B0)
- TQ3 (B0)
- TQ4 (B2)
- TQ5 (B2)
- TQ6 (B2)
- TQ7 (A2)
- VVC1 (B1)

A | B | C | 2-10 | D | E | F | G | H